

PIONEER SERIES

PIONEER R7 TFT G6586TFT

BH

R.R.P.

EAN: 8431284817015

The largest member of the Pioneer family, it has a maximum speed of 20km/h and a running surface of 140x51cm.



Monitor

Measurements:

Distance, Time, Speed, Calories, Pulse, Inclination

- Max. user weight: 130Kg
- Weight: 98Kg
- Dimensions: 172cm x 87cm x 172cm
- Power: 3,5CV/2CV
- Speed: 1-20km/h
- Running surface: 140x51cm



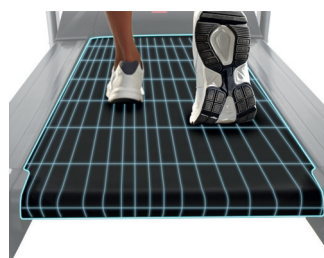
TOUCH&FUN TECHNOLOGY

Increase the fun during your workouts with the virtual tours or your favourite music and videos.



FULLY CUSTOMIZED SOFTWARE

Enjoy a fully customized software, with the capability to adapt the best training programs through a TFT touchscreen.



GREAT RUNNING SURFACE

Its wide design allows a wider running surface of 140x51 cms, which enables a more comfortable workout.



POWERFUL MOTOR

Get your workouts to the maximum with the 3,5CV motor which allows up to 20 km/h speed.

Treadmills



Specs	Pioneer R7 TFT G6586TFT
Use frequency	Intensive
Maximum user weight	130Kg
Power (peak/continue)	3,5CV/2CV
Speed	1-20Km/h
Max. electrical elevation	0-12
ECO mode	Yes
Speed instant keys	Yes
Elevation instant keys	Yes
Running area (L x W)	140x51cm
Damping system	6 elastomers
Contact heart rate measuring	Yes
Fan	Yes
Soft Drop System (SDS)	Yes
Transport wheels	Yes
Length	172cm
Width	87cm
Height	145cm
Weight	98Kg
Foldable	Yes
Programs	
Preset programs (Prg)	36
Random program (RP)	No
Customizable profiles (uprg)	Yes
Fitness test (FT)	No
Heart rate control program (HRC)	Yes
Recovery Program (RT)	No
Body Fat test (BF)	No
Monitor	
Screen	TFT 9"
Telemetric heartrate	No
Bluetooth heartrate	No
iConcept	No

 Notes